



THAMIRABHARANI ENGINEERING COLLEGE

(Approved by AICTE, New Delhi and Affiliated to Anna University, Chennai)

Chathirampudukulam, Chidambaranagar - Vepemkulam Road.

Thatchanallur, Tirunelveli 627 358, Tamil Nadu.



7.1.3 Describe the facilities in the institution for the management of the following types of degradable and non-degradable waste

1. Solid waste management.
2. Liquid waste management.
3. E-waste management.

S.NO	GEO TAGGED PHOTOS	PAGE NUMBER
1	Solid waste management	2
2	Liquid waste management	4
3	E-waste management	6

7.1.3 Describe the facilities in the institution for the management of the following types of degradable and non-degradable waste (Within 500 words)

Waste management steps:

Identify Wastes

The College provides safe, effective, and efficient waste management services for managing nonhazardous solid waste, recyclable waste, and hazardous waste. The College community is responsible for identifying the type of waste produced and using the appropriate College management system.

Evaluate Waste

The College community must evaluate their waste for its physical, chemical, and biological characteristics to determine how it is to be properly managed.

A waste may be:

1. Recyclable material (e.g., paper, soda cans)
2. Compostable organic waste (e.g. food, animal bedding, biodegradable plastics)
3. Non-hazardous solid waste
4. Hazardous radioactive waste: containing or contaminated with a radioactive isotope
5. Hazardous biological waste: containing or contaminated with an infectious or potentially infectious agent, a biological toxin, animal carcasses, genetically modified organisms, etc.
6. Hazardous chemical waste: waste chemicals, products which are chemical in nature (cleaning agents, paint, motor oil, and pharmaceuticals), products that contain chemicals (fluorescent lamps, thermometers), or materials contaminated with chemicals (contaminated soil or rags)
7. Otherwise Regulated Material: asbestos, car batteries, contaminated soil, and construction debris



Principal



Manage Wastes

Once wastes have been identified and evaluated, the College community must manage it according to applicable College of Minnesota waste management instructions. These waste management instructions have been developed to keep the college in compliance with all applicable laws and regulations and to promote a safe and healthy workplace.

1. Solid waste management

The term solid waste management mainly refers to the complete process of collecting, treating and disposing of solid wastes. In the waste management process, the wastes are collected from different sources and are disposed of. This process includes collection, transportation, treatment, analysis and disposal of waste.

Institution implements solid waste management by enforcing waste segregation rules. Presence of dust bins in all class rooms, canteen, boys and girl's hostel. Sweepers are allocated in all departments to ensure the collection solid waste.



Fig 7.1.3.1 Boys rest room

[Signature]
Principal

THAMIRABHARANI ENGG COLLEGE,
Tirunelveli, Tamilnadu-627 358

THAMIRABHARANI ENGINEERING COLLEGE

(Approved by AICTE, New Delhi and Affiliated to Anna University, Chennai)

Chathirampudukulam, Chidambaranagar - Vepemkulam Road.

Thatchanallur, Tirunelveli 627 358, Tamil Nadu.



Fig 7.1.3.2 Dustbin Girls rest room

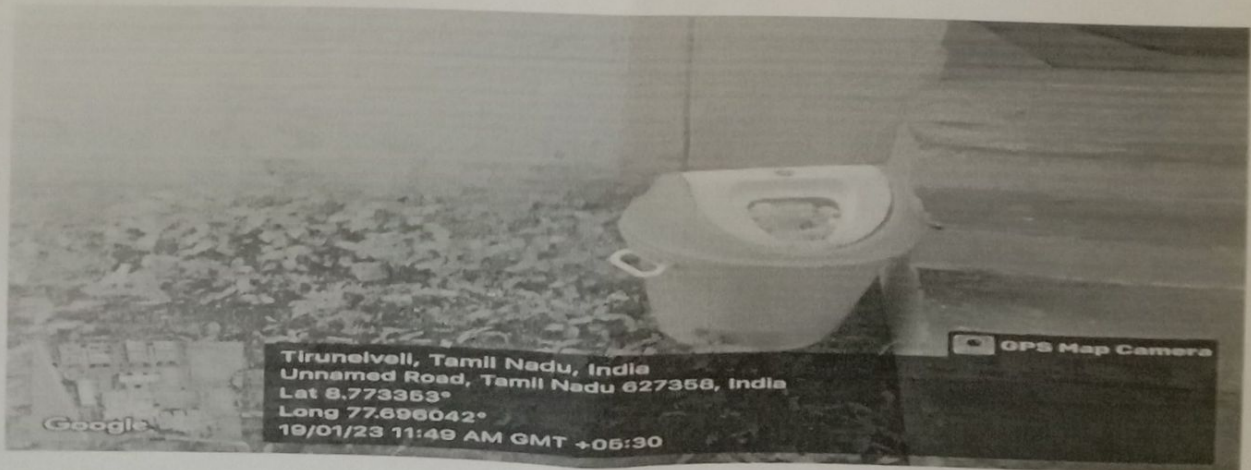


Fig 7.1.3.3 Dust bin in main block

Coat
Principal
THAMIRABHARANI ENGG COLLEGE
Tirunelveli, Tamilnadu-627 358



1. Liquid waste management

The Institution follows the systematic procedure for proper management and disposal of liquid waste. The wet waste from the college, hostels and canteen is given away to bio fertilizer plants for making eco-friendly fertilizers. A sewage treatment plant for the college is being conceived. This treated water is then used for the gardening and other purpose. Institution also conducts discussions with students to make them aware about the liquid waste.



Fig 7.1.2.1 waste water

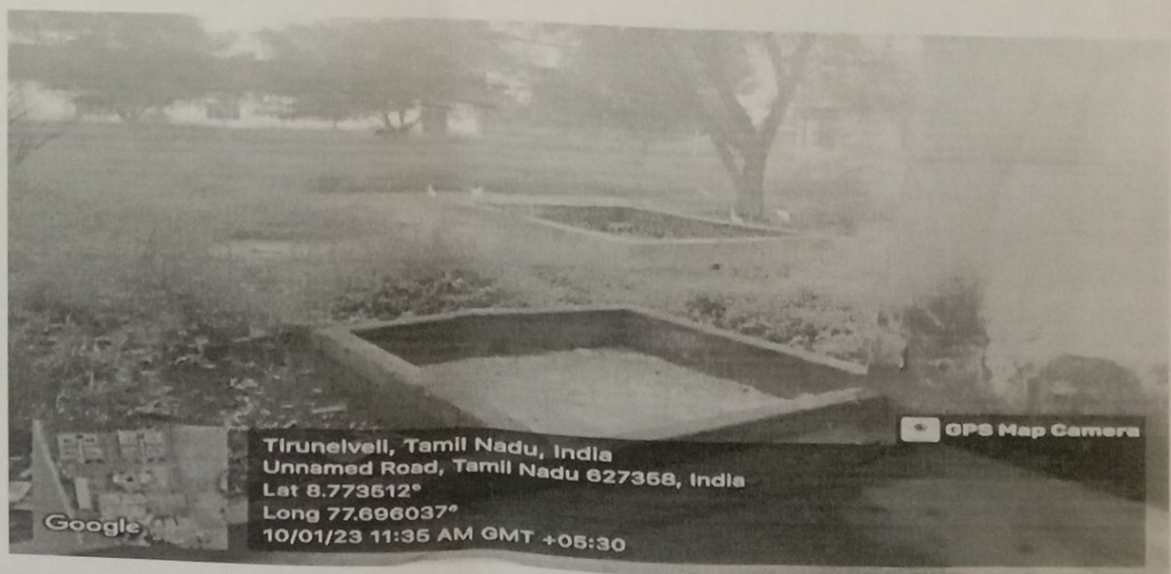


Fig 7.1.2.2 waste water used for trees

eat

Principal

THAMIRABHARANI ENGG COLLEGE.

Tirunelveli, Tamilnadu-627 358

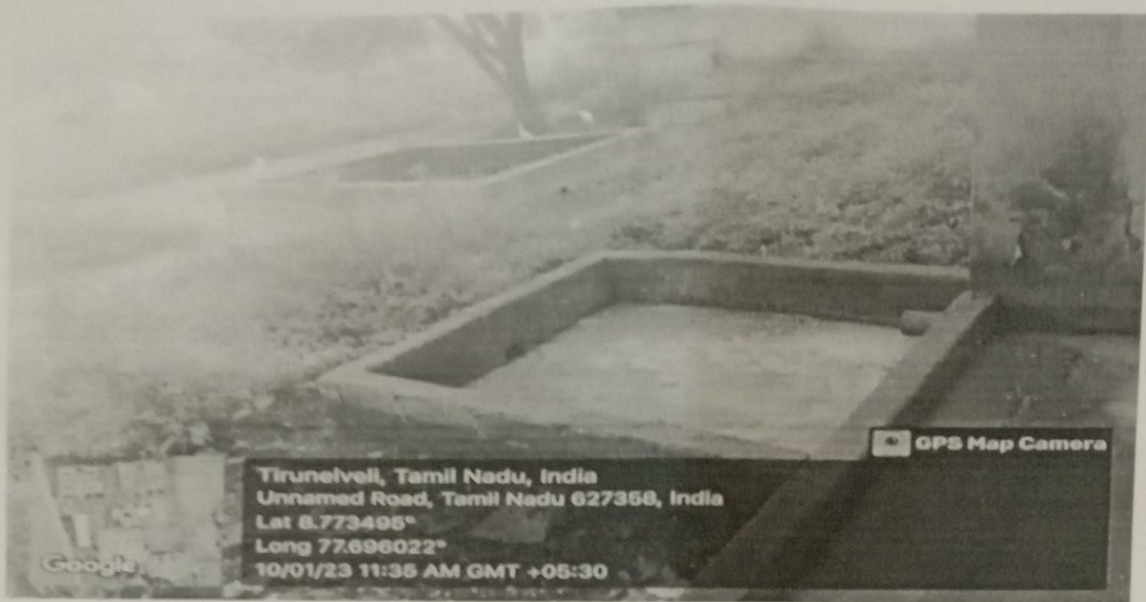


Fig 7.1.2.3 waste water used for trees

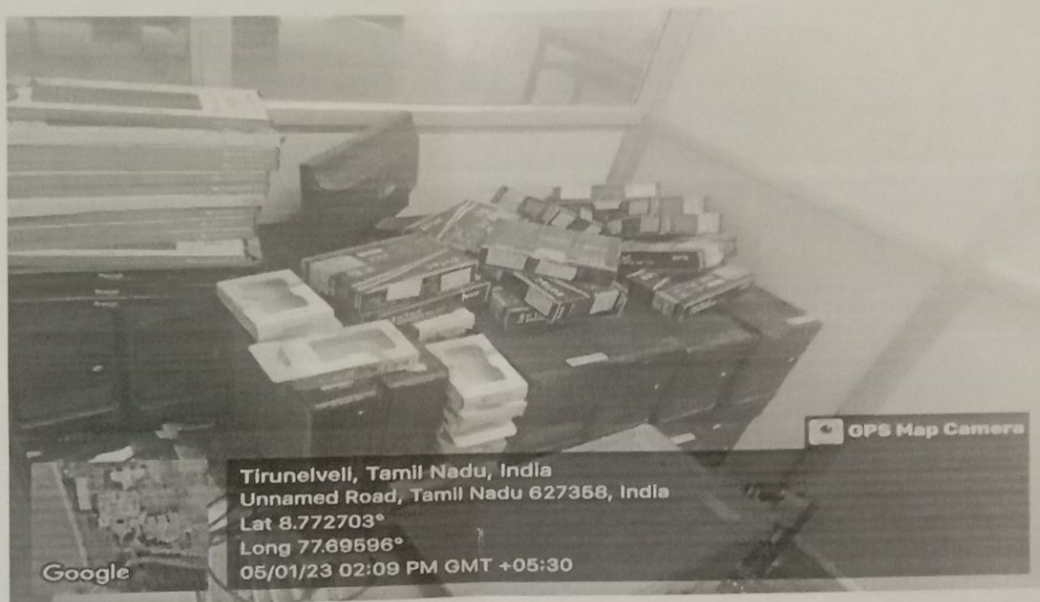


Fig 7.1.2.4 waste water used for trees



2. E-waste management

Almost all computers, printers and electronic devices are in working conditions and no damages are generated. If e-wastes are generated, it is planned to sell them to e-waste recycling company or by "BUY BACK" policy, they are replaced with newer one, for e.g.. Batteries for UPS, Monitors, CPU of computers, etc. The toners in the printers are refilled rather than throwing it out after it gets over. The UPS batteries are normally exchanged for new batteries. The suppliers themselves take the used batteries and replace them with new ones.



Carl
Principal
THAMIRABHARANI ENGG COLLEGE.
Tirunelveli, Tamil Nadu 627 358

THAMIRABHARANI ENGINEERING COLLEGE

(Approved by AICTE, New Delhi and Affiliated to Anna University, Chennai)

Chathirampudukulam, Chidambaranagar - Vepenkulam Road.

Thatchanallur, Tirunelveli 627 358, Tamil Nadu.



Paul
THAMIRABHARANI ENGINEERING COLLEGE
Tirunelveli, Tamil Nadu 627 358